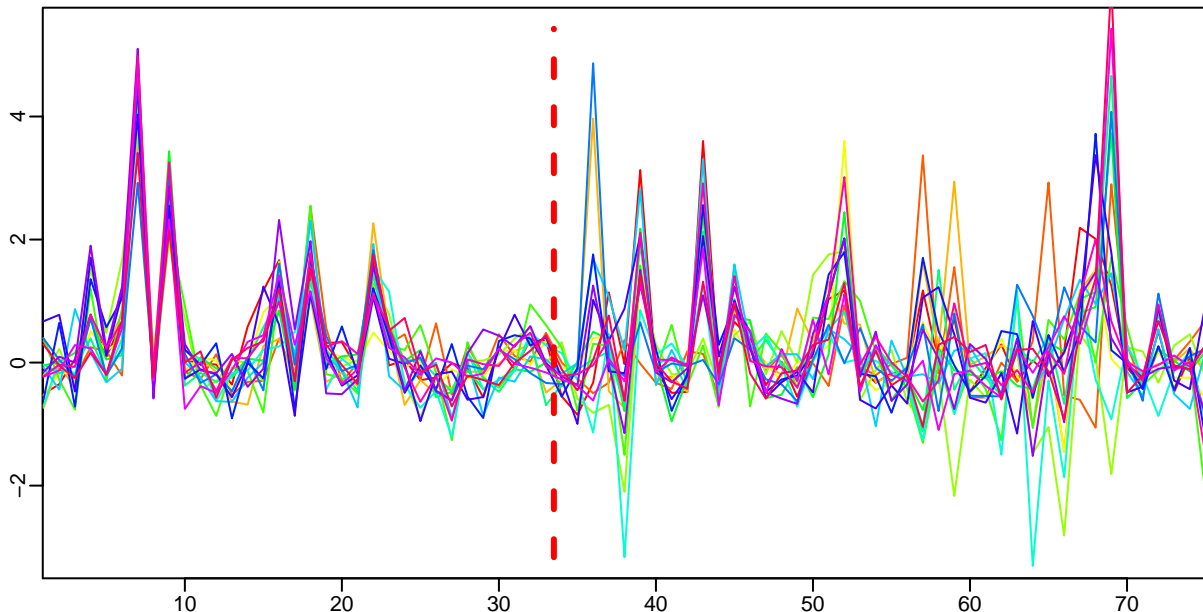


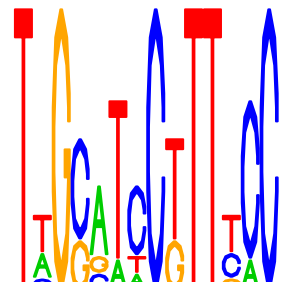
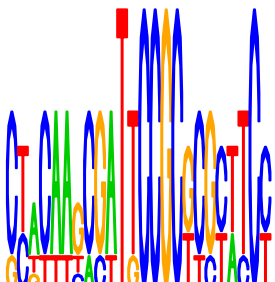
Cluster: 0109 mtu; resid: 0.28; r/c: 17/33

11 Apr 27 11:27:08 iter=2000  
cMonkey Version 4.8.3 mtu

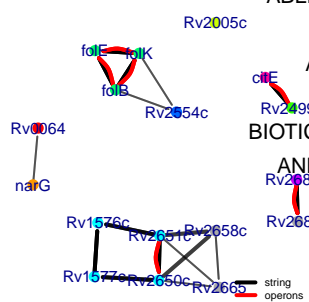


upstream meme PSSM #1; e=0.89

upstream meme PSSM #2; e=50



- log10(P) upstream meme      log10(P.clust)=-5.33; 17 seqs; 12 uniq
- 14.39 POSSIBLE phiRv2 PROPHAGE PROTEIN: Rv2650c
  - 14.39 POSSIBLE phiRv2 PROPHAGE PROTEASE: Rv2651c
  - 14.39 Probable phiRv1 phage protein: Rv1577c
  - 7.34 Probable phiRV1 phage protein: Rv1576c
  - 5.91 POSSIBLE PROPHAGE PROTEIN: Rv2658c
  - 5.65 GTP cyclase: Rv3609c
  - PROBABLE DIHYDRONEOPTERIN ALDOLASE FOLB (DHNA): Rv3607c
  - PROBABLE HYDROXYMETHYL-7,8-DIHYDROPTERIN DIPHOSPHOKINASE: Rv3606c
  - PROBABLE RESPIRATORY NITRATE REDUCTASE (ALPHA CHAIN) NARG: Rv1161c
  - 2.93 Holliday junction resolvase-like protein: Rv2554c
  - ASE (CITRITASE) (CITRIDISMOLASE) (CITRASE ALDOLASE): Rv2498c
  - 2.80 POSSIBLE OXIDASE REGULATORY-RELATED PROTEIN: Rv2499c
  - BIOTIC-TRANSPORT ATP-BINDING PROTEIN ABC TRANSPORTER: Rv2688c
  - AND ALANINE AND VALINE RICH PROTEIN ABC TRANSPORTER: Rv2686c
  - 0.33 hypothetical protein: Rv2005c
  - 0.22 hypothetical protein: Rv0064
  - 0.09 HYPOTHETICAL ARGININE RICH PROTEIN: Rv2665



-200      -100      -1