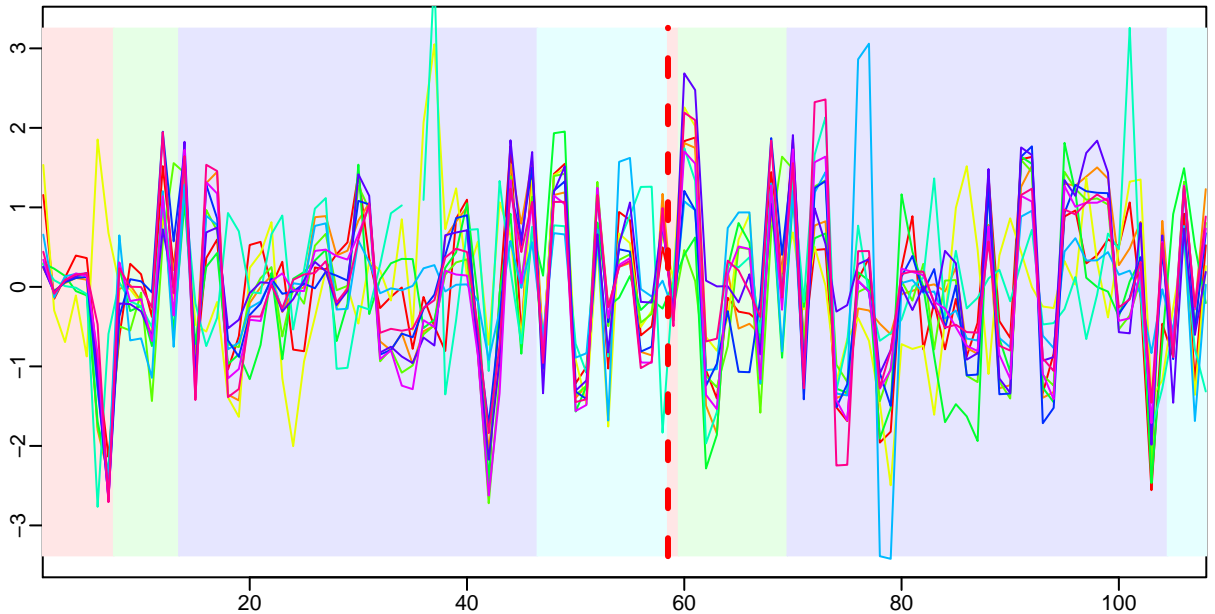
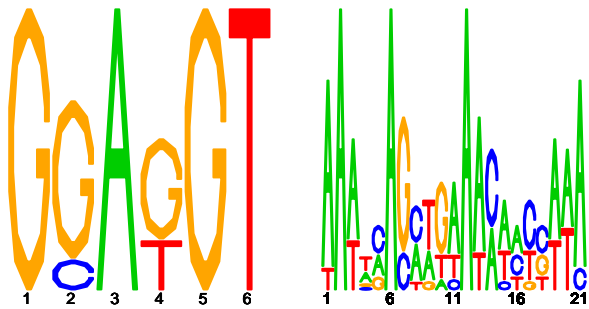


Cluster: 0141 mmp; resid: 0.34 0.23 0.42 0.32; r/c: 11/58

10 Jan 15 15:02:38 iter=2999
cMonkey Version 4.3.5 mmp

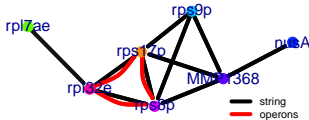


upstream meme PSSM #1; $e=2.5e+00$ upstream meme PSSM #2; $e=5.1e+03$

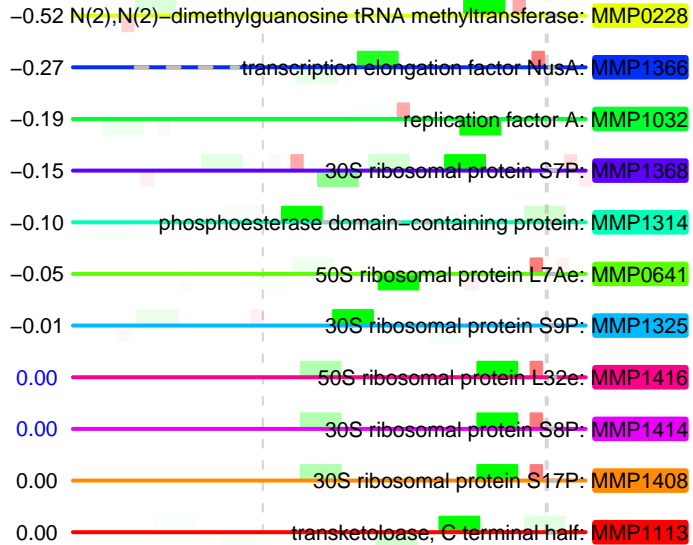


MMP1314 trm1

MMP1113



log10(P) upstream meme log10(P.clust)=NA; 11 seqs; 9 uniq



-200

-100

-1