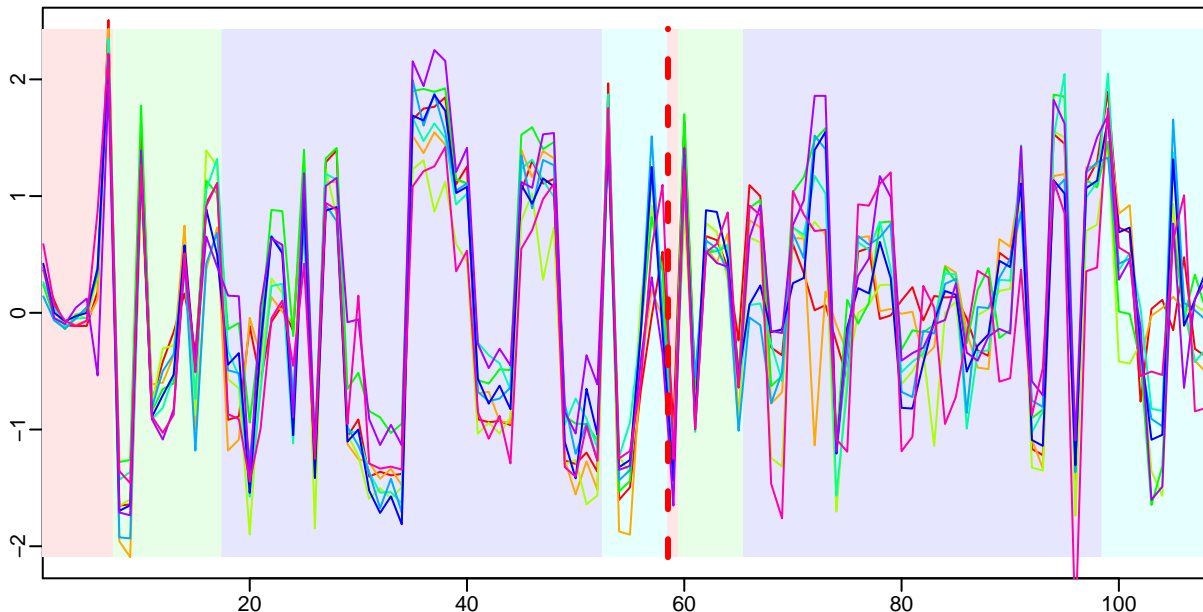
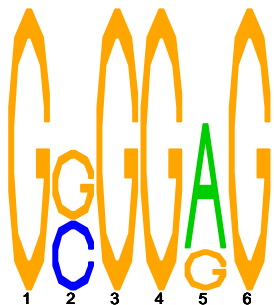


Cluster: 0036 mmp; resid: 0.09 0.18 0.18 0.20; r/c: 9/58

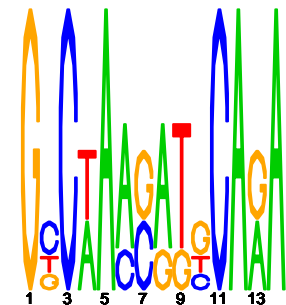
10 Jan 15 15:02:38 iter=2999
cMonkey Version 4.3.5 mmp



upstream meme PSSM #1; e=8.5



upstream meme PSSM #2; e=380



log10(P) upstream meme

log10(P.clust)=NA; 9 seqs; 4 uniq

