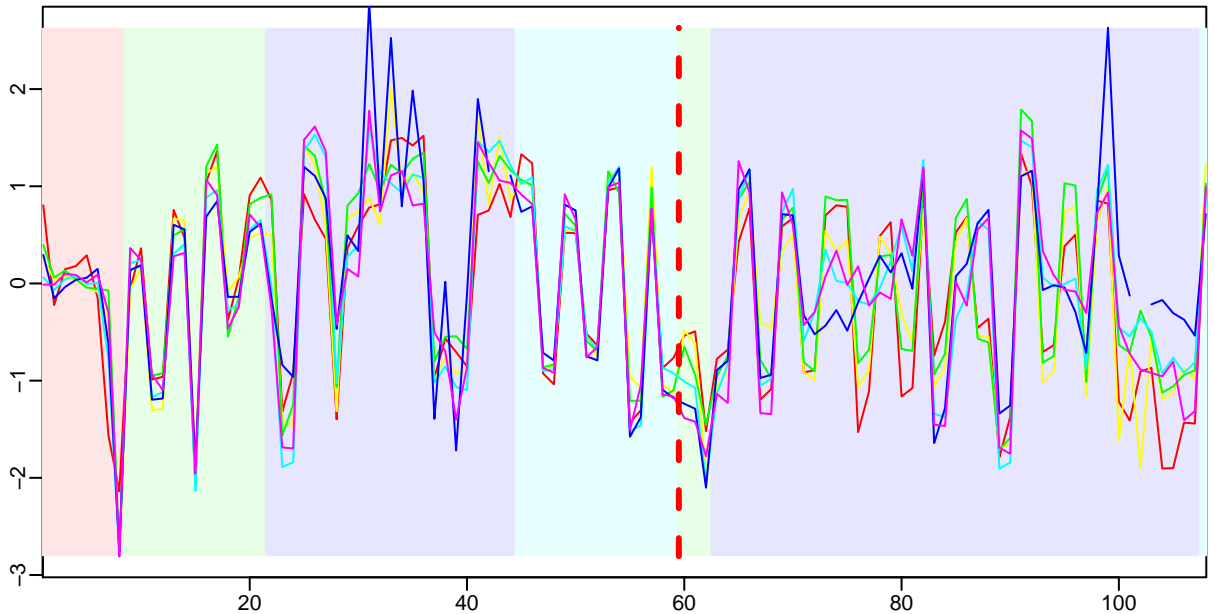
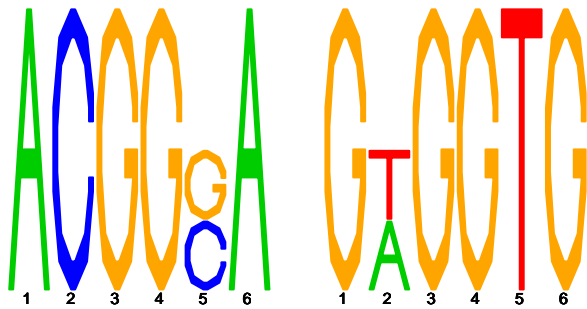


Cluster: 0003 mmp; resid: 0.14 0.12 0.26 0.10; r/c: 6/59

10 Jan 15 15:02:38 iter=2999
cMonkey Version 4.3.5 mmp



upstream meme PSSM #1; e=1.7e+00 upstream meme PSSM #2; e=2.2e+03



log10(P) upstream meme

log10(P.clust)=NA; 6 seqs; 3 uniq

-0.40 tetrahydromethanopterin S-methyltransferase subunit G: MMP1566

-0.40 tetrahydromethanopterin S-methyltransferase subunit A: MMP1564

-0.40 tetrahydromethanopterin S-methyltransferase subunit B: MMP1563

-0.10 V-type ATP synthase subunit B: MMP1045

-0.10 V-type ATP synthase subunit A: MMP1044

-0.05 hypothetical protein: MMP0017

IMR0017



-200 -100 -1